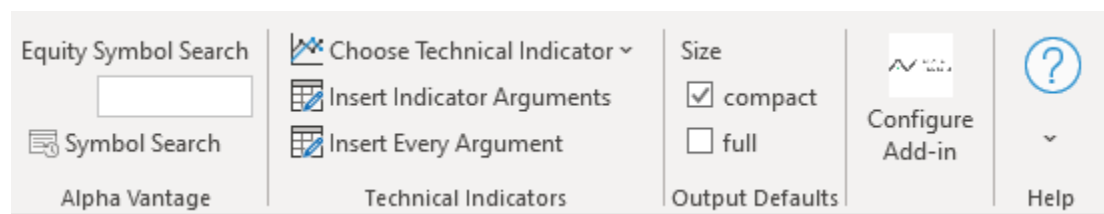




# Excel Ribbon Quick Tour

After installing the add-in and configuring the API Key the Alpha Vantage ribbon tab should look like



## Equity Search

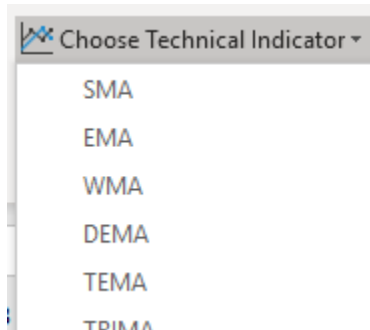
The equity search box on the ribbon gives the user a quick and useful way to find symbols used when querying Alpha Vantage. For example, typing “Lloyds” in the box returns

Symbol	Name	Type	Region	MarketOpen
LYG	Lloyds Banking Group plc	Equity	United States	09:30
LLDTF	Lloyds Banking Group plc	Equity	United States	09:30
LLOBF	Lloyds Banking Group plc 9.25% NON-CUM IRR PRF SHS GBPO.25	Equity	United States	09:30
LLOY.LON	Lloyds Banking Group plc			
REGIO2B1.MEX	Fondo Lloyd Plus SA de CV S.I.I.D.			
PUNJLLOYD.NSE	Punj Lloyd Limited			
ORCG.ILN	HAPAG LLOYD AG HAPAG LLOYD ORD			
LLOYDSME.BSE	Lloyds Metals and Energy Limited	Equity	India/Bombay	09:15
LYGN.MEX	Lloyds Banking Group plc	Equity	Mexico	08:30
LLOYDFIN-EQ.NSE	LLOYDS FINANCE INR10	Equity	India/NSE	09:15

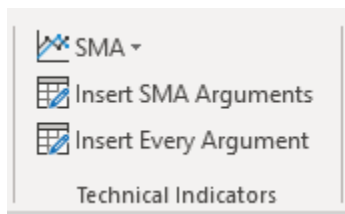
Information in each line can be copied to the clipboard or saved directly to the selected cell in the spreadsheet. Clipboard copy is available by selecting the row and right clicking.

## Technical Indicators

The “Choose Technical Indicator” menu will show a list of all available indicators of which only a few are shown here



Choosing SMA will cause the ribbon to look like



Because of the possibility of many parameters for some indicators the interface has been left quite flexible. As a convenience to the user the “Insert” menu items write the selected range of the spreadsheet with either the parameters for that specific indicator or a list of all parameter for all indicators (any parameter not used in that calculation is ignored. For more information about Technical Indicator parameters please view the [website](#).

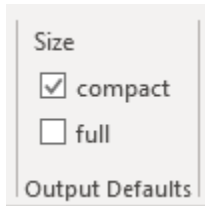
For the indicator SMA there are only 2 parameters

<u>Argument Name</u>	<u>Argument Value</u>
time_period	60
series_type	<input type="text" value="close"/>
	close
	open
	high
	low

Where possible when the ribbon writes an argument range to the spreadsheet it will include validation of the data as well. For example, series\_type must be one of close, open, high or low.

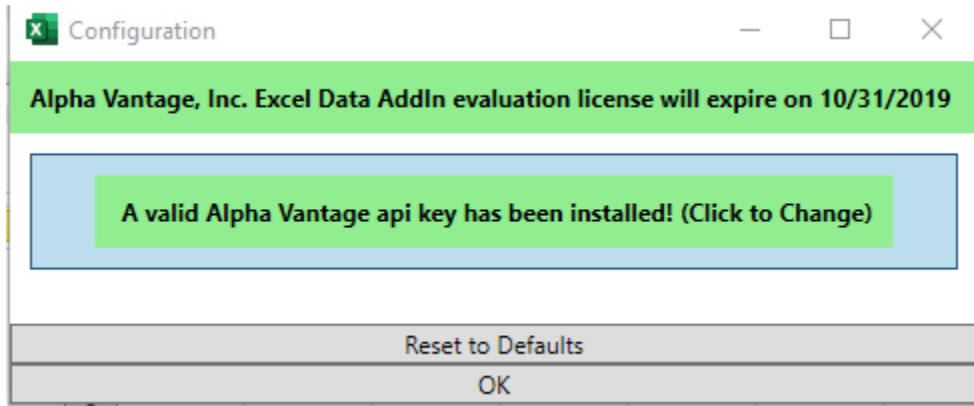
## Output Defaults

The Excel UDF functions have a few output options. These can always be specified in the function call and that is recommended so the output configuration will be the same each time. However, it is possible to set defaults for these output parameters on the ribbon for when they are not explicitly specified in the UDF.



## Configuration

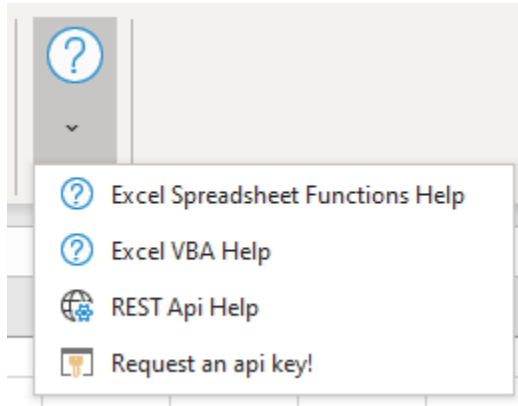
The “Configure Add-in” button brings up a dialog to allow configuration of the Add-in. Currently this has expiration information (for beta versions) and a place to input/update the API Key



Additional configuration information may be available in the future in this dialog

## Help

The help menu has several choices



The first choice brings up a compiled html help file with the Function Reference for Alpha Vantage spreadsheet functions. The second choice documents the API available in VBA for Alpha Vantage data.

The third choice sends the user to the web page documenting the Alpha Vantage REST API in the system web browser. The fourth choice sends the user to the form to request a free API key.